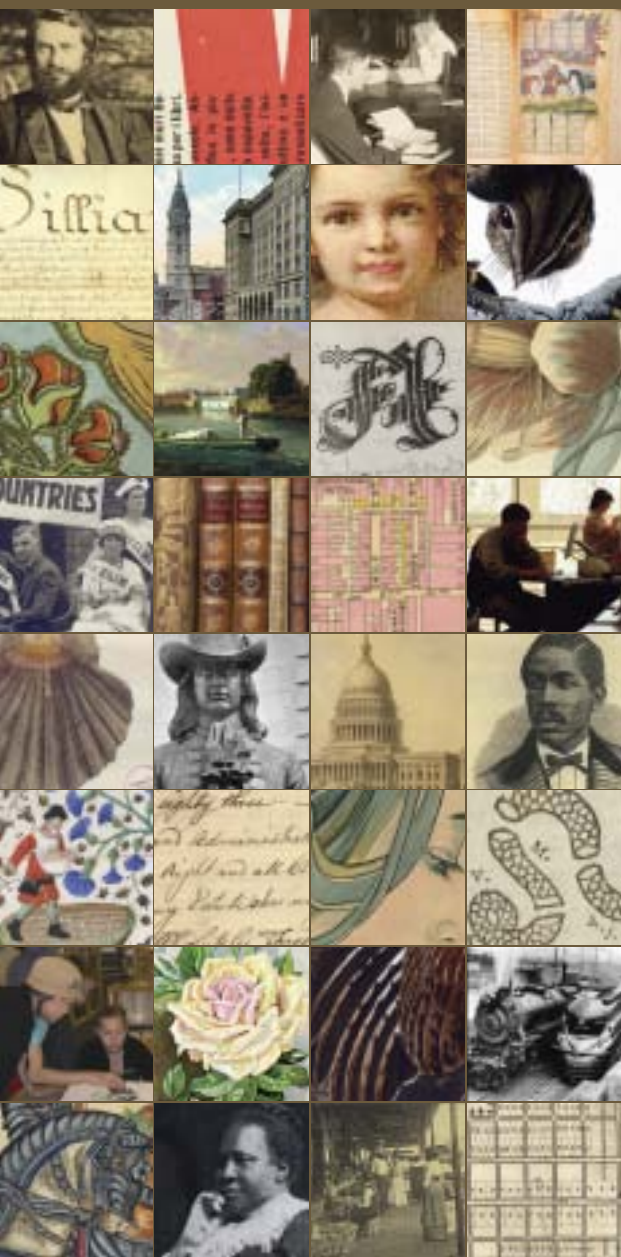


Gateway to Philadelphia-area
research collections from
PACSL – the Philadelphia Area
Consortium of Special Collections Libraries



www.phillyresearch.net

www.phillyresearch.net 33 libraries, one gateway

Point. Click. Research.

PhillyResearch.net from PACSCL –
the Philadelphia Area Consortium of
Special Collections Libraries

PhillyResearch.net offers a new online gateway to the research collections of greater Philadelphia for scholars, students and teachers, Philadelphia-area residents, visitors planning a business or pleasure trip to the area ... or anyone searching for online resources about the Philadelphia region, or resources housed in the area's collecting institutions.

The Philadelphia area is home to one of the nation's richest concentrations of libraries, archives, museums, and historic sites – a premier destination for researchers and visitors from all over the world. Now, you can search library catalogs, explore rich digital image and document collections, and discover new research resources and communities of interest from a single access point.

PhillyResearch.net combines robust search tools with easy-to-use interfaces and tips and hints for students, visitors, and lifelong learners. Use it to explore the collections of PACSCL's more than 30 member libraries. Use it as a gateway to the many other organizations that together make Philadelphia one of the country's leading centers for the exploration of American culture, history, and heritage. And plan a visit to explore their collections in person, using the map and contact information in this guide.



About PACSCL

PhillyResearch.net's sponsor, the Philadelphia Area Consortium of Special Collections Libraries, encourages scholars, educators, and other diverse audiences to explore and engage with member libraries' uniquely rich holdings and, through collaboration, strengthens these collections and the institutions that preserve and share them.

PACSCL's members include

- The nation's oldest circulating library
- Major archival repositories
- The libraries of some of the country's most prestigious universities, museums, and learned societies

PACSCL's member libraries include

- more than 4,000,000 rare books, pamphlets and periodicals
- more than 260,000 linear feet of manuscripts and archival materials
- more than 7,500,000 photographs, maps, architectural drawings, and works of art on paper

Collection strengths include

- national, local, and regional history
- the natural and social sciences
- world history, literature, and religion
- art and architecture
- business and industry

PACSCL works collaboratively with other organizations serving the library, archive, museum, and cultural and heritage tourism communities to improve access to and strengthen collections. Some of PACSCL's partners include PALINET, The Pennsylvania Academic Library Consortium, Inc., the Delaware Valley Archivist Group, the Museum Council of Greater Philadelphia and the Delaware Valley, the Office of Commonwealth Libraries, the Pennsylvania Advisory Committee on Collaborative Digitization, the Greater Philadelphia Tourism & Marketing Corporation, and the Greater Philadelphia Cultural Alliance.

Information on the more than 30 illustrations from member libraries used in this brochure is available at <http://www.pacscl.org/brochure>



1 The Academy of Natural Sciences of Philadelphia

Ewell Sale Stewart Library
1900 Benjamin Franklin Parkway, Philadelphia PA 19103-1195
215-299-1040 • <http://www.ansp.org/library/>
Museum and Library – Natural Sciences. Founded in 1812, the library's resources focus on natural history and the environment from the 16th century to the present.

2 American Philosophical Society

105 South Fifth Street, Philadelphia PA 19106-3386
215-440-3400 • <http://www.amphilsoc.org/>
Library. Founded by Benjamin Franklin in 1743, the Society houses one of the nation's principal collections in the history of science, anthropology, and early America.

3 Athenæum of Philadelphia

219 South 6th Street, Philadelphia PA 19106
215-925-2688 • <http://www.philaathenaeum.org/>
Museum and Library. Founded in 1814, the Athenæum houses a nationally significant collection on architecture and design history.

4 Bryn Mawr College

Mariam Coffin Canaday Library, Bryn Mawr, PA 19010-2899
610-526-6576 • <http://www.brynmawr.edu/library>
Academic Library. British and American literary history; European travel accounts to Africa, Asia and Latin America; Medieval and Renaissance manuscripts and books; women's history; history of London.

5 Chemical Heritage Foundation

Donald F. and Mildred Topp Othmer Library of Chemical History
315 Chestnut Street, Philadelphia, PA 19106
215-873-8205 • <http://www.chemheritage.org>
Museum and Library – Chemical science. Books published from 1478 to the present day, plus manuscripts, photographs, art and artifacts, documenting the history of chemical achievement.

6 Chester County Historical Society

225 N. High Street, West Chester, PA 19380-2691
610-692-4800 • <http://www.chestercohistorical.org>
Museum, Library and Photo Archives. Founded in 1893, the collections document all aspects of Chester County's past. CCHS administers the Chester County Archives, (www.chesco.org/archives).

7 City of Philadelphia, Department of Records The Philadelphia City Archives

Suite 150, 3101 Market Street, Philadelphia PA 19104
215-685-9401, 02, 03 phone • 215-685-9409 fax
<http://www.phila.gov/records/> • Hours: Mon-Fri 8:30-5
Municipal Archive. City records not in current use and possessing historical, administrative, legal, research, cultural or other important value. Home of the www.phillyhistory.org online photo archive.

8 College of Physicians of Philadelphia

19 South 22nd Street, Philadelphia, PA 19103-3097
215-563-3737 • <http://www.collphyphil.org/>
Museum and Library. Library collections focus on medical history: books, journals, prints/photographs, physician papers, and institutional archives. The Mütter Museum is known for its nineteenth-century collection of anatomical and pathological specimens.

9 Delaware Art Museum

2301 Kentmere Parkway, Wilmington, Delaware 19806
302-571-9590 • <http://www.delart.org/>
Museum, Library and Archives. The library supports the collections: Howard Pyle and American illustrators; British Pre-Raphaelite art; John Sloan; American art 1757-present.

10 Franklin & Marshall College*

Shadek-Fackenthal Library – Archives and Special Collections
P. O. Box 3003, Lancaster PA 17604-3033
717-291-4225 • http://library.fandm.edu/archives/new_archives.html
Library and Archive. Materials documenting Pennsylvania-German culture, the classics, the natural sciences, exploration, the United States Civil War, Benjamin Franklin, and the history of Franklin and Marshall College.

11 Free Library of Philadelphia

Rare Book Department, 1901 Vine Street, Philadelphia, PA 19103-1189
215-686-5416 • <http://www.freelibrary.org/>
Public Library. Collections include illuminated manuscripts, Americana, common law, children's literature and illustrations, and Pennsylvania German Fraktur.

12 German Society of Pennsylvania*

Joseph P. Horner Memorial Library
611 Spring Garden Street, Philadelphia PA 19123
610-627-2332 ext. 19 • <http://www.germansociety.org/library.html>
Library and Archives. The library houses more than 70,000 volumes; three-quarters are in German. The collections also include German-American newspapers and a German-American archive documenting life in the United States since 1683.

13 Hagley Museum & Library

P.O. Box 3630, Wilmington, DE 19807
302-658-2400 • <http://www.hagley.org/>
Museum and Library. The collections of 36,000 linear feet of manuscripts, 225,000 titles, and more than 2 million images document the history of American business and technology.

14 Haverford College Library

Magill Library, Quaker & Special Collections
Haverford, PA 19041
610-896-1161 • <http://www.haverford.edu/library/special/>
Academic Library. Quaker books and mss, 17th century to present, especially regarding Native Americans, civil rights and women's rights, Quakers in Japan; other rare books and manuscripts dating back to the 13th century; photographs and historic maps.

15 The Historical Society of Pennsylvania

1300 Locust Street, Philadelphia, PA 19107-5699
215-732-6200 • <http://www.hsp.org>
Library – Local, Regional, National, and Family History. Strengths in Pennsylvania, New Jersey, Delaware, with additional material on the original 13 states. Incorporates The Balch Institute for Ethnic Studies and The Genealogical Society of Pennsylvania.

16 Independence Seaport Museum

211 S. Columbus Blvd., Philadelphia PA 19106
215.413.8639 • http://www.phillyseaport.org/Museum_Library.shtml
Museum, Archives and Library. More than 12,000 volumes, 9,000 ship plans and a significant collection of rare books, manuscripts, photographs, maps and charts.

17 LaSalle University, Connelly Library

1900 West Olney Avenue, Philadelphia PA 19141-1199
215-951-1285 • <http://www.lasalle.edu/library/>
Academic Library. Strengths include Imaginative Representations of the Viet Nam War, the Holocaust, and Trauma Literatures; the Owen Wister Collection; the Art of the Japanese Tea Ceremony; the life and work of Bob Dylan.

18 Library Company of Philadelphia

1314 Locust Street, Philadelphia, PA 19107-5698
215-546-3181 • <http://www.librarycompany.org>



Library – American Culture to 1880. Founded in 1731 by Benjamin Franklin, the Library Company holds the region's largest collection of printed and graphic materials relating to early American history.

19 The Lutheran Theological Seminary at Philadelphia

Krauth Memorial Library

7301 Germantown Avenue, Philadelphia, PA 19119-1794

215-248-6329 • <http://www.ltspe.edu/krauth/>

Library – Religion. Original Reformation-era publications; Lutheran liturgical publications from the 16th to 18th century; early printed Bibles and Books of Hours. Campus also hosts the region's Lutheran archives..

20 National Archives, Mid Atlantic Region

900 Market Street (enter on Chestnut Street between 9th and 10th), Philadelphia PA 19107-4292

215-606-0100 • <http://www.archives.gov/midatlantic/>

Archive. Historically significant Federal documents from the region — immigration records, landmark court cases, military records, more — documenting the rights of Americans, the actions of the Federal government, and the American experience.

21 The Pennsylvania Horticultural Society

McLean Library

100 North 20th Street, Philadelphia, PA 19103

215-988-8772 • <http://www.pennsylvaniahorticulturalsociety.org/garden/libraryhome.html>

Library. America's first horticultural society. Strong collection of American and European gardening classics, as well as books, catalogs and images documenting history of Delaware Valley horticulture.

22 Philadelphia Museum of Art

Library, Archives and Visual Resources

Ruth and Raymond G. Perelman Building, 2525 Pennsylvania Avenue, Philadelphia, PA 19130

(mailing address: P. O. Box 7646, Philadelphia, PA 19101)

215-684-7650 • <http://www.philamuseum.org/library/>

Museum and Library – Fine Arts. Library focuses on European, American and Asian painting and sculpture; furniture and decorative arts; arms and armor; costume and textiles; prints, drawings and photographs; and modern and contemporary art.

23 Presbyterian Historical Society

425 Lombard Street, Philadelphia, PA 19147-1516

215-627-1852 • <http://www.history.pcusa.org/>

Founded in 1852 and serving as the national archives of the Presbyterian Church (U.S.A.), includes official records, personal papers, books, and images documenting the history of the church and the Reformed tradition in America.

24 Rosenbach Museum & Library

2008-2010 DeLancey Place, Philadelphia, PA 19103

215-732-1600 phone • <http://www.rosenbach.org/>

Museum and Library. Manuscript and printed American History, British literature, and book illustration; also large special collections of James Joyce, Marianne Moore, and Maurice Sendak.

25 State Library of Pennsylvania*

Forum Building, Commonwealth Ave. & Walnut St., Harrisburg, PA

(mailing address: Office of Commonwealth Libraries, Bureau of State Library, 333 Market Street, Harrisburg, PA 17126-1745)

717-787-4440 • <http://www.statelibrary.state.pa.us/>

Library. The State Library of Pennsylvania collects and preserves our written heritage through materials published for, by, and about Pennsylvania. Collection strengths are Pennsylvania Newspapers, Genealogy, Pamphlets, and General Assembly Collection.

26 Swarthmore College Library

Friends Historical Library; Peace Collection

500 College Avenue, Swarthmore, PA 19081-1399

610-328-8497 (Friends); 610-328-8557 (Peace)

<http://www.swarthmore.edu/library>

Academic Library. Quaker history, doctrine, and activity in various fields; Indian rights, women's rights, and abolition of slavery; the history of the peace movement.

27 Temple University

Samuel Paley Library, Philadelphia, PA 19122-6088

215-204-8230 • <http://www.library.temple.edu/>

Academic Library. The Urban Archives Center, the Charles L. Blockson Afro-American Collection; science fiction and fantasy, 60s-70's underground/alternative publications, artists' books, printing/publishing archives.

28 The Abraham Lincoln Foundation of The Union League of Philadelphia

140 South Broad Street, Philadelphia PA 19102

215-587-5594 • degeorgeb@unionleague.org

Library. Specializing in American Civil War, American and European history, World War I & II, regional history, biographies and early 20th century travel.

29 University of Delaware

Newark, DE 19717-5267

302-831-2229 • <http://www.lib.udel.edu/ud/spec/>

Academic Library. Books, manuscripts, and other materials from the fifteenth to the twentieth century with particular strengths in the arts; English, Irish, and American literature; history and Delawareana; horticulture; and history of science and technology.

30 University of Pennsylvania

Rare Book & Manuscript Library

3420 Walnut Street, Philadelphia, PA 19104-6206

215-898-7088 • <http://www.library.upenn.edu/rbm/>

Academic Library. American, British, & Continental history, literature, & philosophy; medieval & Renaissance studies; Shakespeare; history of science & technology, esp. chemistry; cookery; book history & arts; local arts history; South Asia; Judaica.

31 Villanova University

Falvey Memorial Library, 800 Lancaster Avenue, Villanova PA 19085-1683

610-519-5182 • <http://library.villanova.edu>

Academic Library. Augustiana, European imprints to 1800, Hubbard/Roycrofter Press, Irish and Irish-American history, incunabula, fine bindings, North American imprints to 1820. Also hosts university archives and the Augustinian Historical Institute.

32 Wagner Free Institute of Science

1700 West Montgomery Avenue, Philadelphia, PA 19121

215-763-6529 ext. 12 • <http://www.wagnerfreeinstitute.org/>

Museum and Library. Founded in 1855 as a free educational institution. The library collections focus on natural and physical sciences, engineering, education, and technology from the 17th through the early 20th century.

33 Winterthur Museum, Garden and Library

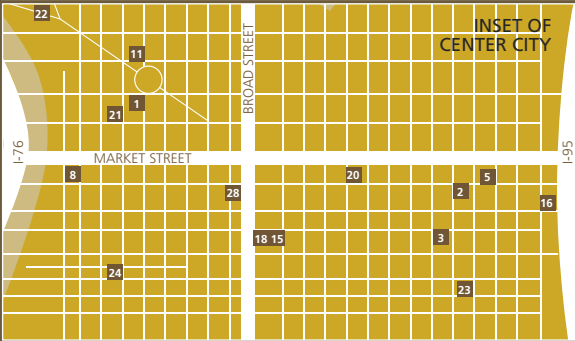
Winterthur, DE 19735

302-888-4681 • <http://www.winterthur.org/>

Museum and Library. American decorative arts and material culture. Includes architecture and design pattern books, trade catalogs, manuscripts, printed ephemera, Shaker Collection, Decorative Arts Photographic Collection.

*Associate Member

List complete as of December 2007. Hours and access policies vary from library to library; telephone or consult website for additional information.



For a more detailed map and driving directions from Google, see <http://www.pacscl.org/map>



PACSCL
 The Philadelphia Area Consortium
 of Special Collections Libraries
 P. O. Box 22642, Philadelphia PA 19110-2642
 215-985-1445 voice, 215-985-1446 fax
<http://www.pacscl.org>

*Funding for this brochure and
 the online gateway project
 was provided by a grant from
 the William Penn Foundation.*